



Educational Impact Report



efstudyabroad.com

Discover a world worth studying

02	Our Educational Philosophy
04	Faculty-Led Programs
06	First-Year Programs
08	Global Competencies Assessment
10	Future Nobel Laureates Scholarship Program
12	EF Impact Around the World



Dear educators,

For over 55 years, EF Education First has been driven by the belief that the world is better when people try to understand one another—a philosophy that we at EF Study Abroad ground our experiences in each and every day.

Our intentionally designed programs not only prepare students to be better learners and stronger job candidates, but to be kinder leaders, bigger dreamers, and sharper thinkers.

No matter where studying abroad takes EF students, they'll return home with the future-ready skills to thrive in our ever-changing world—like the confidence to trust their instincts and the curiosity to keep growing. And we couldn't do it without you.

Thank you for your commitment to student success and your passion for global education. Together, we can help even more students gain deeper understandings of themselves, others, and the world we all share.



Christian Meyer
Executive Vice President
EF Education First

Educational programs with a lasting impact

More and more, we're seeing the learning outcomes of studying abroad reflected in the skills employers crave from incoming talent. With intentional opportunities for the development of these future-ready skills before, during, and after immersion, our programs equip students with the tools to succeed in their academics and beyond. This modern approach to study abroad ensures students don't just observe the world—they engage with it, learn from it, and find their place in it.

Credit transfer and transcripts

We work closely with our School of Record, Colorado State University (CSU), to ensure high academic standards across our study abroad programs. Students enrolled in EF programs can receive an official transcript from CSU that awards and documents credit for the work they've completed on-program.



We're 5x accredited

EF's approach to student learning and program design has been vetted and validated by five trusted learning-service provider accrediting bodies.



In-Country

Intentional experiences

All program components are informed by subject matter experts to facilitate learning and immersion. They include guided exploration, cultural engagement, independent exploration, and personalized choice modules.

Academic resources

From reflection prompts to discussion guides, we provide resources to enhance academic engagement abroad.



Pre-Immersion

Goal setting

Learners outline what they want to get out of the experience to ground them in an approach for their upcoming journey.

Global Competencies Assessment

Groups may choose to include our assessment as part of their program to benchmark intercultural competencies.

Academic resources

We provide faculty with our Global Learning Toolkit in addition to journal and discussion prompts to facilitate student growth.



Post-Immersion

Global Competencies Assessment

If opted in, groups can compare a second assessment against pre-immersion results to measure student learning.

Credentialing

Students receive badges and certificates that further demonstrate evidence of learning and skills development.

Academic resources

Faculty receive tools to connect the program experience with students' academic, personal, and professional growth.

Faculty-Led Programs

Building impactful programs, together

From envisioning the possibilities to planning the experience to embarking on the adventure, faculty members are at the heart of the study abroad programs they lead. Our Faculty-Led Programs help professors take their curriculums beyond the classroom—all over the world.

“As soon as I came back from my program, I decided to take other perspectives that I hadn’t noticed before. I took more chances, I became such a better global citizen, and I realized I had such potential to have an impact on this world.”

ALEXIS K.
Student from Pennsylvania

93%

of educators say these programs helped students expand their knowledge of the world.

89%

of educators say these programs help their students become more confident and independent.

92%

of learners feel more confident navigating unfamiliar places after studying abroad.



EF STUDY CENTER: LONDON

Field Programs

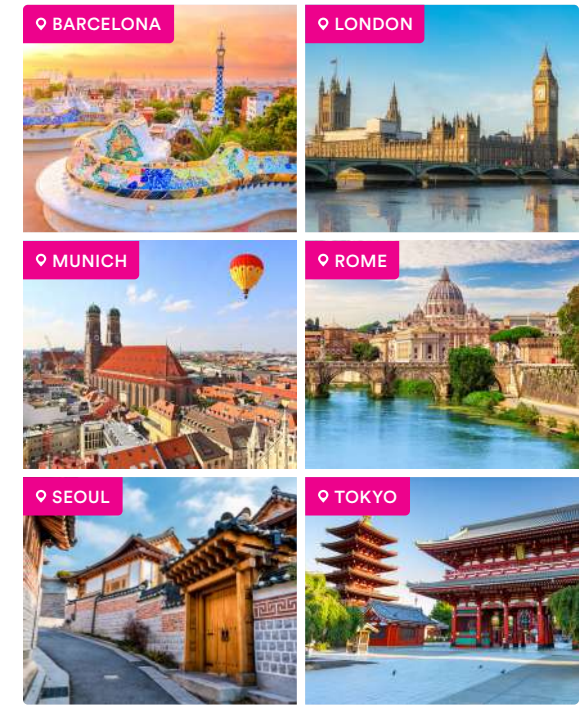
7+ DAYS

Whether professors opt for an established itinerary or create a custom experience, these engaging programs make it easy to explore academics off campus. Out in the world, students learn through hands-on discovery.

Study Center Programs

3+ WEEKS

Based in EF Hub cities, these custom programs fuse classroom instruction and cultural immersion. Courses are taught in curated learning spaces and enhanced by thematic field visits that help students explore academics in action.



With EF Study Centers, local staff, and deeply rooted regional knowledge, we’re able to create highly customized—and highly impactful—study abroad experiences in the heart of each EF Hub city.

Custom First-Year Programs

Jump-start higher-ed journeys abroad

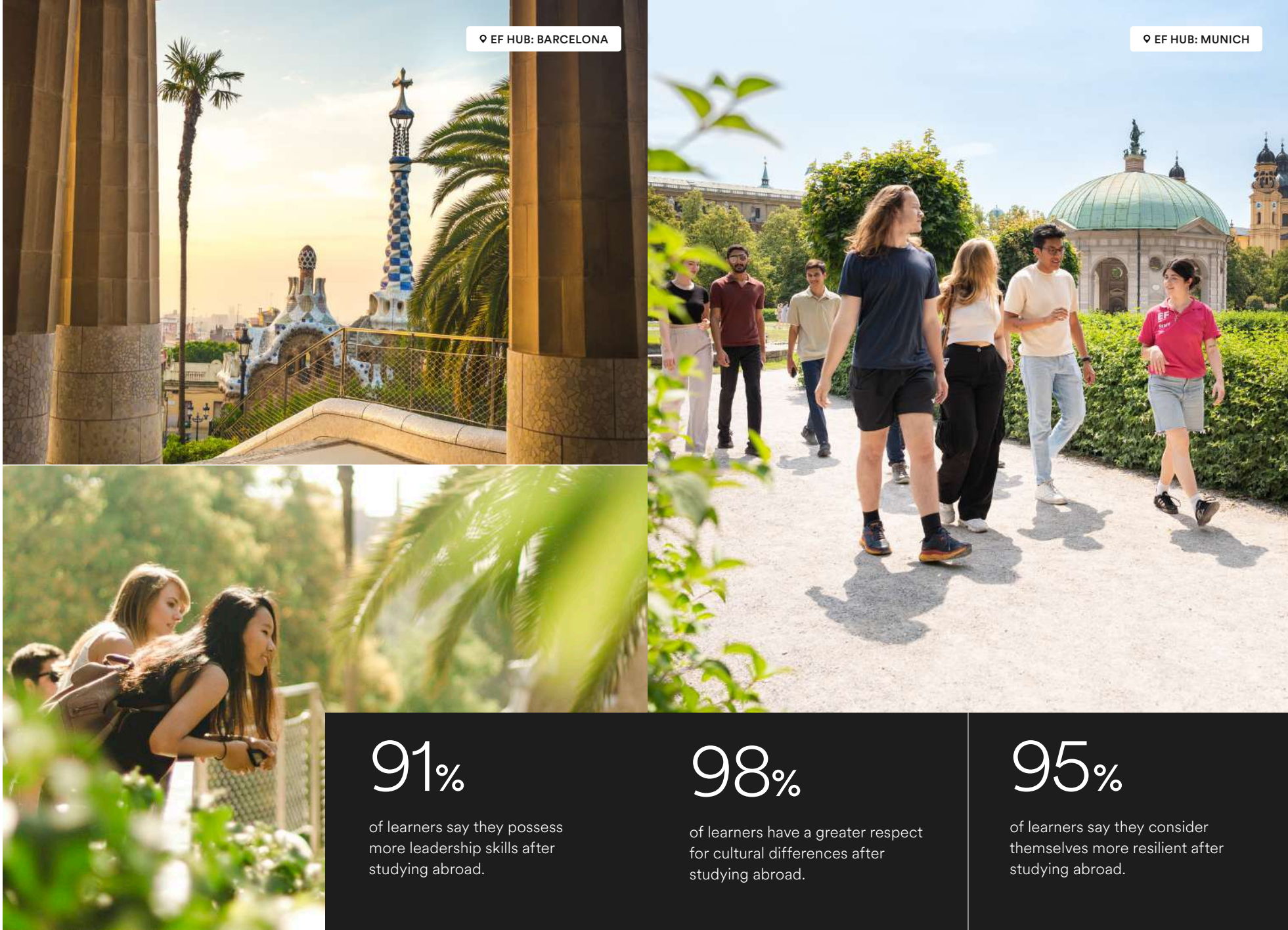
Built collaboratively with institutions, these custom programs bring students abroad for their first semester of college: a pivotal stage of academic and personal growth. While living in EF Hubs, students take classes with local professors at international partner universities. After earning credit and gaining perspectives, they'll return home with the tools to learn and lead with confidence.

How they set institutions apart:

Intercultural learning opportunities attract curious, growth-minded applicants

Off-campus experiences help manage enrollment while bolstering retention

Students returning from abroad help evolve campus culture through a new global lens



91%

of learners say they possess more leadership skills after studying abroad.

98%

of learners have a greater respect for cultural differences after studying abroad.

95%

of learners say they consider themselves more resilient after studying abroad.

Creating custom experiences

Every Custom First-Year Program is custom-built based on an institution's unique learning objectives. In the case of one partner university, those objectives centered around technology in South Korea. Tapping into the resources of an EF Hub, we worked together to design a thematically impactful Custom First-Year Program in Seoul.

How we brought it to life:



Goal alignment: We discussed intended outcomes to land on a program goal: Helping students obtain a firm grasp of technology and society in Seoul by prompting them to think critically, build perspective, and make connections.



Planning and sourcing: We curated goal-specific courses with a partner university in Seoul and sourced housing in the city center. With our local partners, we created opportunities for students to engage with their field of study: the tech industry.



Opening the opportunity: This program was woven directly into the institution's admissions process, providing incoming first-year students with the opportunity to begin their higher-ed experiences in Seoul, South Korea.

Foundation Programs

Develop essential interdisciplinary skills abroad

Designed with the needs of first- and second-year students in mind, these programs prepare students to thrive in college and beyond. Each established itinerary is interdisciplinary in nature, offering relevant learning opportunities across multiple majors. In addition to courses at international partner universities, all foundation programs include an EF-led course focused on developing future-ready competencies.

How they benefit students:

Direct enrollment allows students to travel with a diverse cohort of learners from across the country

Intentional courses enhance higher-ed journeys and prepare students with career-ready skills

Students return to their home universities with a semester’s worth of credit and global perspectives



♥ EF HUB: SEOUL



♥ EF HUB: ROME

3 CREDITS

Foundation course: Communication in a Global Context

Led by an EF Site Director, this signature course helps students hone the future-focused skills needed to thrive in today’s world. Using their place-based experiences abroad as a catalyst for reflection, students explore their own strengths and values, examine how they work best with others, and discover ways to create and communicate innovative solutions to complex global problems.

Course experience and outcomes:

Throughout the course, students are prompted to engage in cross-cultural communication, collaborate in peer groups, and explore their own biases through self-discovery.

The course culminates with a capstone project that challenges students to deeply identify and effectively communicate who they are—from their strengths and interests to their personal and professional goals.

Students come out of the course with a stronger sense of self, increased curiosity about the world around them, and the confidence to thoughtfully communicate their opinions and ideas.

How our students compare to worldwide competency norms

By studying abroad with EF, educators and students alike have access to our **Global Competencies Assessment** tool. This tool was developed with the Cultural Intelligence Center, a leader in cultural competency assessments which has helped top organizations measure individual effectiveness and capacity to function within culturally diverse situations. This measurement is known as an individual's "CQ".

As the leader in faculty-led study abroad, our partnership with the Cultural Intelligence Center is a natural step toward our goal of providing students with real world experiences alongside measurable, lifelong benefits.

"Studying abroad was the best decision I ever made, there is only so much you can learn in a classroom; the real way to learn is to get out there and experience it firsthand. You get so much more excited to learn and eager to continue."

JOSHUA A.
EF Study Abroad student



CQ assessment categories ▾

- 01

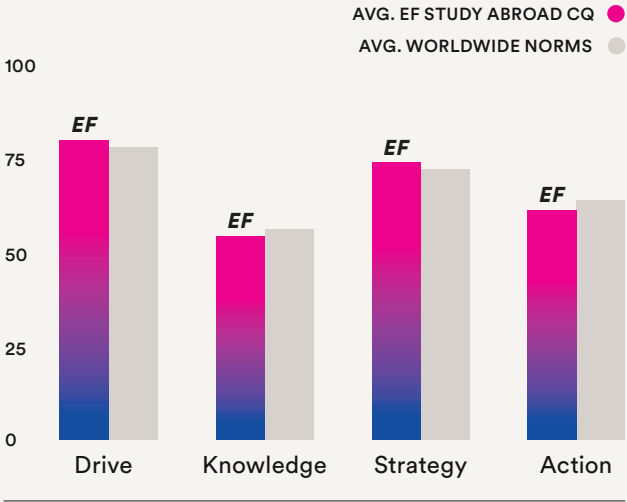
Drive measures interest, persistence, and confidence during multicultural interactions.
- 02

Knowledge measures a person's understanding about how cultures are similar and different.
- 03

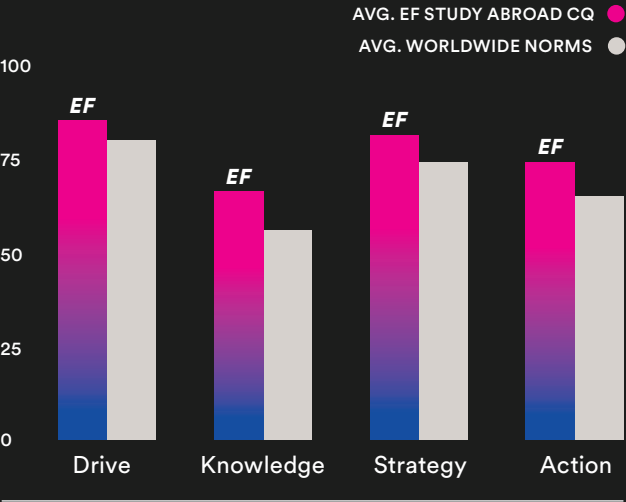
Strategy measures a person's awareness and ability to plan for multicultural interactions.
- 04

Action measures a person's ability to adapt when relating and working in multicultural contexts.

Self-ranking before travel



Self-ranking after travel



Reported increases in CQ after traveling with EF Study Abroad:

+5%

Learners reported that their **drive** had increased from 81 to 85 points after travel.

+20%

Learners reported that their **knowledge** had increased from 55 to 65 points after travel.

+8%

Learners reported that their **strategy** had increased from 75 to 81 points after travel.

+18%

Learners reported that their **action** had increased from 62 to 73 points after travel.

Sources:
1. EF & CQ 2023 Cultural Assessment
2. Post-Program Evaluation



LEARN MORE

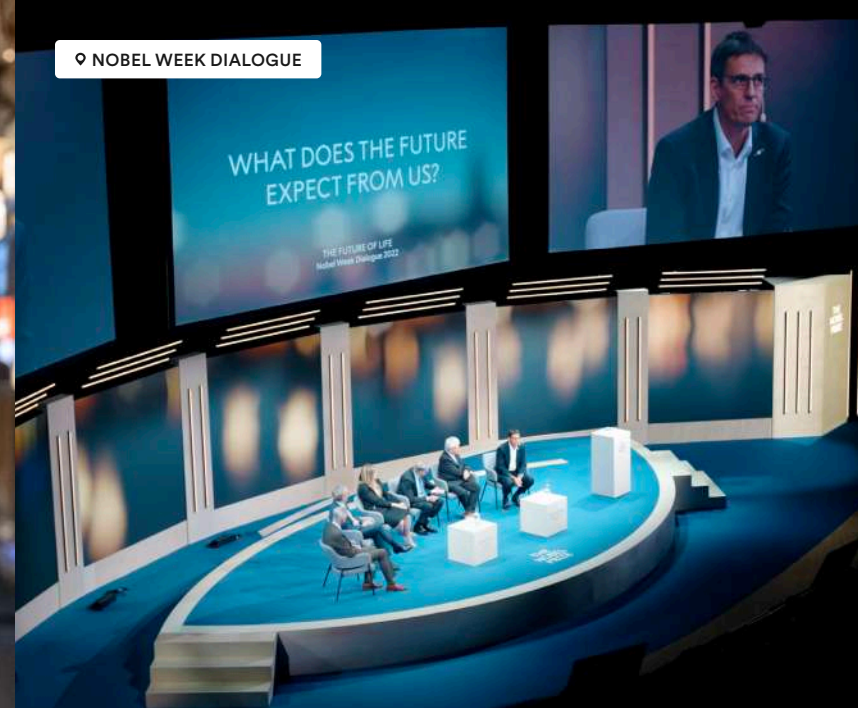
Future Nobel Laureates Scholarship Program

Created with The Forum on Education Abroad and the Nobel Prize Museum, this high-impact student program is fueled by the belief that in order to change the world, you need to experience it. In addition to participating in a project-based course, an international field study, and an action-learning project, participating students learn from some of the world's leading minds at the Nobel Week Dialogue in Stockholm, Sweden.



Our student scholars in action

Each year, students from all academic disciplines—and all parts of the world—are encouraged to apply for this first-of-its-kind scholarship. The 10 student scholars selected in 2023 worked in groups to ideate and pitch innovative solutions for pressing global issues they felt passionately about. The students then had the unique opportunity to showcase their work in the Nobel Prize Museum. You can learn more about some of their projects on the right.



Ann Marie Flusche
Duke University School
of Medicine

“Electronic waste is one of the fastest growing waste streams in the world... I propose joining efforts in providing world access to the internet and donating old devices to be reused for education.”

From their proposal:
Education Accessibility Through Electronic Waste



Nicolas Quijano Franco
Earlham College

“As a medical interpreter and an advocate for culturally competent care... I’ve come to believe that preserving cultural customs and dismantling the legacy of colonization in healthcare is essential.”

From their proposal:
Decolonizing Healthcare



Selen Qarajeh
Princess Sumaya University
for Technology

“Improving outcomes for Alzheimer’s patients worldwide is an effort that must be tackled from multiple angles. I propose we focus on a combination of education, research, and innovation.”

From their proposal:
Alzheimer’s Research

EF/Nobel Prize Museum Global Citizen Certificate

Traveling with EF Study Abroad gives students the chance to earn a certificate from EF and the Nobel Prize Museum. To do so, students must demonstrate their learning through a multimedia project based on their unique program experiences. This Global Citizen Project prompts students to reflect on the impact of their time abroad, empowers them to work toward positive change, and helps them hone the skills to become leaders for global peace and prosperity.

LEARN MORE



“Even though we didn’t speak the same language, we were able to connect through our actions. Together, we helped to build a section of trail through the town... It showed me that I am much more capable than I thought I was as an individual and even more capable when working together with a group of like-minded people.”



A Love Letter to Peru
Zoey V., West Valley College

“This journey has been incredible and unforgettable. It has given me an understanding of how people operate and live in various regions of the world. As a foreign national in the United States, I am constantly gaining fresh perspectives on diverse cultural lifestyles, and this trip has added to my list of new experiences.”



Galapagos Essay
Alex J. M., University of Tennessee

“I plan to make the world a better place by opening doors which many would be too scared to open themselves; people are not as different as they seem despite differing languages and cultures... The world is changing all around us constantly and people can be made observant of it if they are willing to expand their boundaries.”



The German Experience
Dhawal R., University of Texas at Arlington



Project impact

The Global Citizen Project challenges students to showcase their knowledge of their program’s global dimensions and demonstrate their ability to confront important global challenges through thoughtful action. In addition to joining a global community of fellow change-makers, students will receive an official EF/Nobel Prize Museum Global Citizen Certificate to display on their resumes, LinkedIn profiles, and more.



Partners in educational excellence

When you work with EF Study Abroad, you join a global academic community. Our network of educational partners is comprised of thought leaders and renowned institutions around the world, including:



The Forum on Education Abroad is recognized by the U.S. government as the Standards Development Organization for the field of education abroad.



The Association of International Education Administrators is the only association dedicated exclusively to senior leaders in international education.



EF is the educational partner of the Nobel Prize Museum, an organization dedicated to spreading knowledge and creating discussion around natural sciences and culture.



The Fund for Education Abroad supports students who are underrepresented in the study abroad space—including first-generation students, students of color, and students of varying socio-economic backgrounds



Cultural Intelligence, or “CQ,” is a globally recognized way of assessing and improving effectiveness in culturally diverse situations.



Diversity Abroad is the leading organization that supports educators, policymakers, and others in leveraging global education programs to support students of diverse and underrepresented backgrounds.



An approach that improves the world

As we continue opening the world through education, we are committed to leaving it better than we found it. Each and every day, EF strives to positively impact our planet—and its communities—with eco-friendly practices, animal welfare efforts, and so much more.

Through four key pillars, we’re strengthening our commitment of bringing sustainability to the heart of EF:



Diversity, equity, inclusion, and belonging

Our vision is to make studying abroad possible for all learners regardless of gender identity, race, physical ability, sexual orientation, and socioeconomic status—creating more opportunities for students to experience educational travel.

Our goal is to increase access to study abroad opportunities by expanding and diversifying our network of colleagues and travelers to create an intercultural experience that is educational and transformational for all learners.



“To me, perspective is everything. It challenges our beliefs and causes us to grow as people.”
Aryal W., Student Traveler



Measuring our carbon footprint

We partnered with myclimate, a global leader in carbon accounting and voluntary climate protection projects, to calculate our carbon footprint.



Reducing our carbon footprint

Through tangible action, we aim to reduce our carbon footprint while offering life-changing educational travel experiences to people around the world.



The EF Forest Initiative

As the primary partner of the WeForest agroforestry project in East Africa, we aim to foster the growth of over three million native trees in the next five years.



Engaging with our global community

As a global education company, we actively engage with communities around the world to embed our efforts in a broader movement of change.



BROWSE PROGRAMS:

efstudyabroad.com



CONTACT US:

800-873-2250

“Students come home with this sense of, ‘I’m part of a bigger world. Other people are more like me than I thought they were.’ They also have a different and deeper appreciation for who they are and what they have here at home.”

Margo G.
Administrator from Texas

